



2 bedroom apartment for sale £2,000,000
Nova Victoria, Westminster

Nova Victoria, Westminster

Guide Price £2,000,000

A stunning 2 bedroom apartment, located on the 8th floor with views towards Belgravia and Buckingham Palace in Nova, new luxury development in the heart of SW1. Secure underground parking included. The apartment has been finished to the highest standards, with wooden flooring in the reception room and bedrooms, and marble tiles in the bathrooms. The development offers exclusive private facilities for residents, including: 9th floor landscaped communal roof garden, residents' lounge, gym, residents' cinema, business centre and 24hr concierge.

This contemporary accommodation comprises, master bedroom with en suite bathroom, second bedroom, family bathroom, open plan reception/dining room with kitchen, lift access and 24 hour concierge. All the windows in the apartment are floor to ceiling which flood the property with an abundance of natural light.

The Nova Building is luxury new development of 170 apartments of the highest specification by Land Securities. Located at the centre of London's most prestigious neighbourhoods in SW1, on the doorstep of Buckingham Palace.

Tenure: Leasehold (999 years)



2 bedroom apartment for sale | 925ft²

Tenure: Leasehold

Ground Rent: £800 per annum

Service Charge: £22,000 p/a

LondonDom.com

Phone: 0207 12345 90 | Email: info@londondom.com

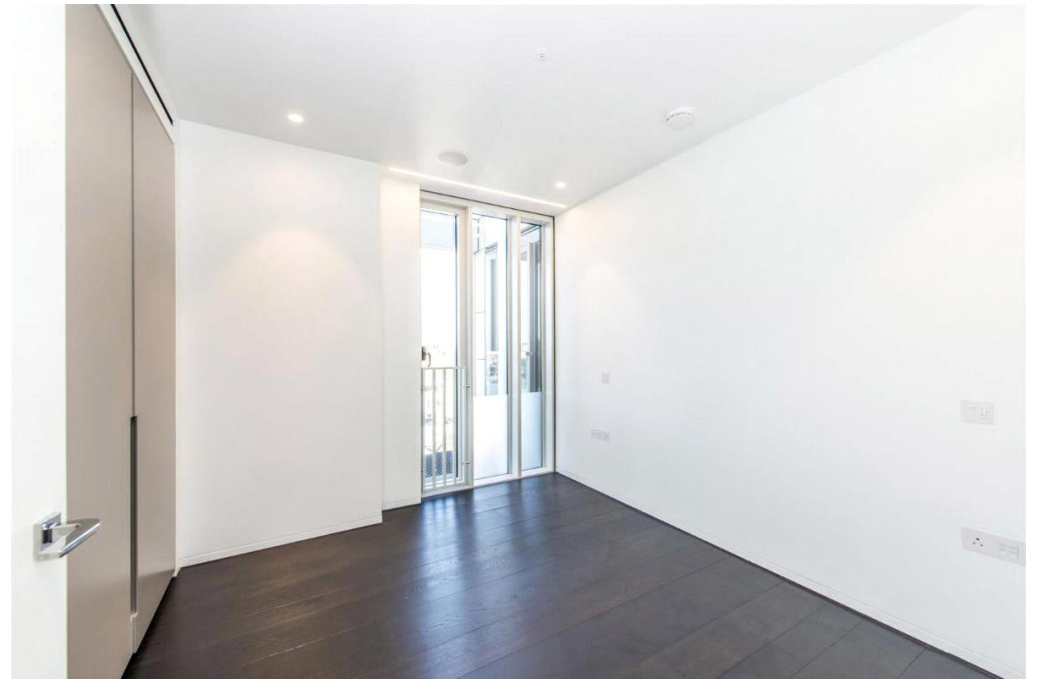
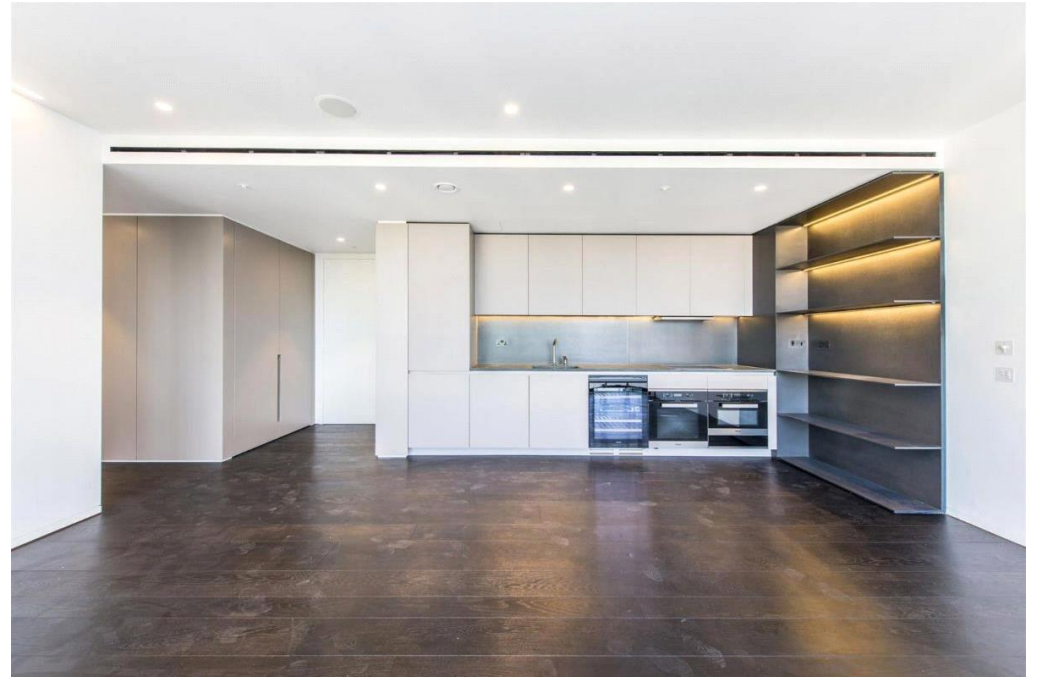
Address: **52 Grosvenor Gardens, London SW1W 0AU**

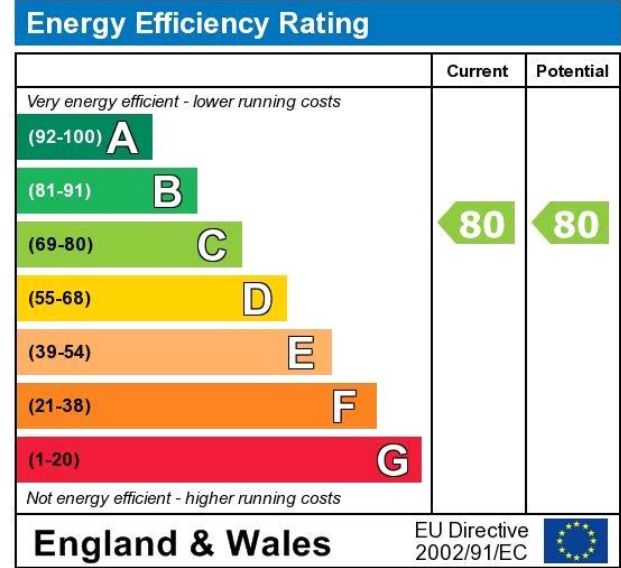
Nova Building, SW1V

Approximate Gross Internal Area = 87.4 sq m / 941 sq ft



Eighth Floor





The energy efficiency rating is a measure of the overall efficiency of a home. The higher the rating the more energy efficient the home is and the lower the fuel bills will be.